



**XLN** CONSTRUCTION

# XLN Construction Ltd.

## Company Profile

### 2023





XLN CONSTRUCTION

XLN Construction Ltd. is comprised of a team with over thirty years' experience within the construction industry and we are approaching a decade of trading as a limited company next year. - We are a specialist groundworks company, however, we frequently offer additional services in order to complete projects.

We work on take on a variety of projects with schemes of up to £1.5m, our main office is based in Medway, Kent, but we work throughout Southeast, across the Home Counties and London.

We pride ourselves on our comprehensive approach to every project ensuring a high standard of works and an open and collaborative mindset when working with our clients. - Since we predominately focus on groundworks, we are often involved in the early stages of projects so are here to provide guidance so our clients can deliver their final vision.

Please take a look at some of our recent work which gives a flavour, this is by no means a complete showcase of services; any questions please feel free to give our office a call or email so that we can discuss future options.

Thank you for taking an interest in XLN and we look forward to the prospect of collaborating together in the future.

Kind regards,

Lee

Lee Nettleingham,  
Managing Director, XLN Construction Ltd.

## Our specialist and core groundwork services:

- Enabling works,
- Earthmoving,
- Installation of piling mats and attendance of piling contractors,
- Foundations, basements and excavations,
- Drainage, underground and ducting systems,
- Reinforcement of concrete works,
- Brick and block work, above and below DPC,
- Block and beam flooring,
- Hard and soft landscaping.





# Damhead Creek Power Station

Hoo Paninsula, Rochester ME3



This project required installation of specialist fencing and catch traps for protected newt and vole species, draining of ponds and waterway into new dikes to avoid flooding at the new site.

Once this enabling work was completed, we excavated a new trench line for 600mm pipelined with a length of some 1,000/ lin.m.

Once excavation was completed, we then installed new concrete manhole chambers to act as flood defense along the existing pipeline in intervals of approx. 50m.

The new pipeline and alterations to existing pipework was then wrapped in terram as well as a layer of 20mm shingle.

Finally we installed new bases and a headwall inlet, before reducing the whole terrain to a foundation level finish requiring substantial earth-moving with the use of 20 ton excavators and D7 dozers.







# Basement excavation for a domestic client

Caterham, Croydon Road, CR3

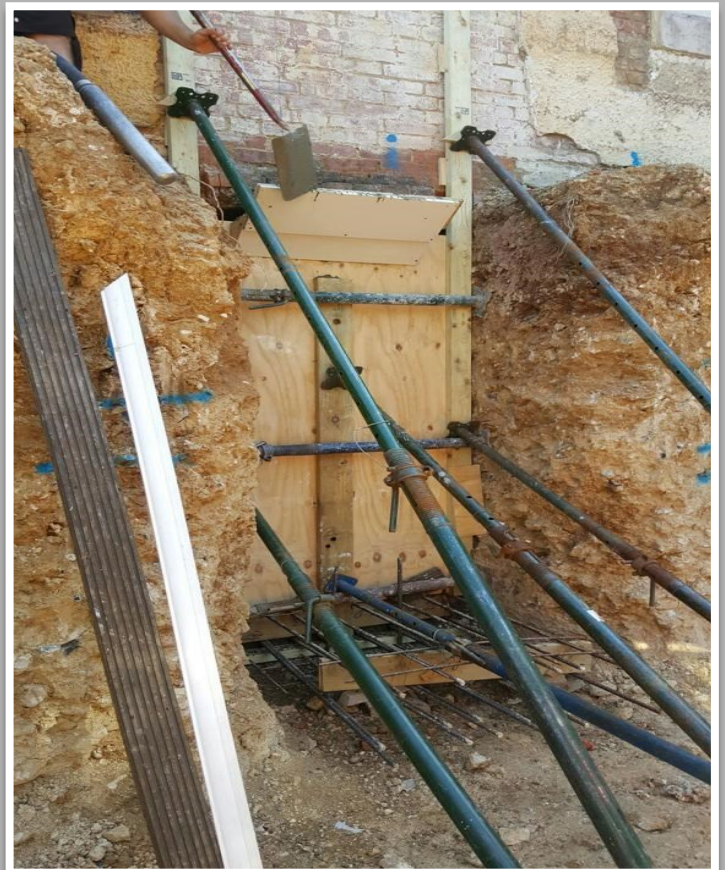


For this project we completed enabling work to remove existing decking and plant life before creating a conveyor system for soil movement.

Following this we moved onto the basement excavation, installing an underpinning system as per structural engineering drawings.

Installation of new drainage was then installed in order to build up a hollow blockwork with reinforcement and concrete infill, a new concrete slab was then laid.

A new steel frame was then installed to support the ground floor, reinforced the concrete slab for the first floor too.—New external steps and paving was then fitted in the clients garden.









# Industrial Storage Warehouse

Medway City Estate, Rochester ME2



For this project we, in attendance with a piling contractor, installed a new piling mat, before moving onto reducing the excavation to complete a formation level.

We then cropped all piles ready for cut and bend schedule followed by ground beams. We then installed a gas membrane and new drainage including aco channels and gullies.

Then commenced formwork and positioning of hanging-bolt sets for steel support columns. - Reinforced concrete slab following a structural engineers' specifications, before tamping the slab to finish.

We then oversaw the erection of a new steel frame before building up a brick and block package to form exterior walls to required height and finish.

Internal floor of warehouse was then screeded to create falls for our new drainage system, new pathways were then installed along the perimeter with a brushed finished.









# Domestic House Build

Cudham, Sevenoaks, TN14

For enabling works on this domestic project we reduced the whole site levels to complete site, before laying new foundations in concrete. – Installed a new service water and foul system for drainage including soak away.

We then formed new ground level perimeter shuttering for a thickening detail for a concrete slab to form raft slab.– Finally, we reduced the perimeter by laying hardcore ready for scaffolders to complete the new structure. And laying of new hard landscaped areas











**XLN** CONSTRUCTION



Map of select previous XLN Projects

## CONTACT US:

 Unit C4 Spectrum Business Centre, Anthony's Way, Medway City Estate, Rochester, Kent, England, ME2 4NP,

 <https://www.xlnconstructionltd.com>

 [info@xlnconstructionltd.com](mailto:info@xlnconstructionltd.com)

 01634 722733

